



CIRCULAR CONNECTORS

SOLDER CUP CONNECTOR

PLASTIC SHELL

- Low cost plastic connector.
- Ideal for prototyping or where pigtail type connectors cannot be used.
- 5 to 12 contacts.

IDENTIFICATION CODE

MCA

P

12

S

FS

SERIES

MCA : Micro Circular AXON' standard series.

CONNECTOR TYPE

P : LCP shell + potting 150°C.
L : LCP shell + potting 200°C.

NUMBER OF CONTACTS

05, 07, 12
 See pages 18 & 19 for contact arrangements.

CONNECTOR GENDER

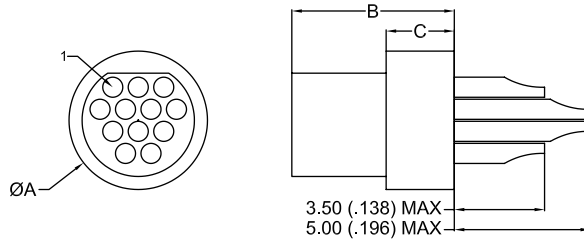
P : male (pin contacts).
S : female (socket contacts).

SOLDER CUP

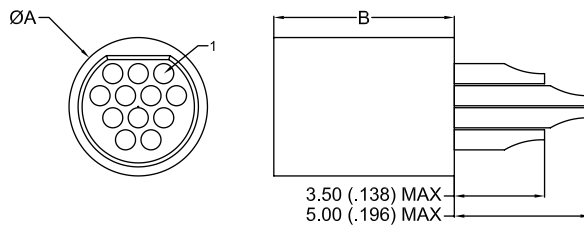
DIMENSIONS

Dimensions are in millimetres (inches).

MALE connector



FEMALE connector



| | Ø A ± 0.10 (.004) | B ± 0.10 (.004) | | C max. |
|-------------|-------------------------|-----------------|--------------|--------------|
| | | Male | Female | |
| 5 P / 5 S | 5.60 .220 | 8.10 .319 | 9.00 .354 | 3.50 .138 |
| 7 P / 7 S | 5.60 .220 | 8.10 .319 | 9.00 .354 | 3.50 .138 |
| 12 P / 12 S | 6.86 .270 | 8.10 .319 | 9.00 .354 | 3.50 .138 |

SUMMARY OF CHARACTERISTICS

| ELECTRICAL & MECHANICAL PERFORMANCE | | MATERIAL & FINISH | |
|-------------------------------------|---|-------------------|---|
| CURRENT RATING | 3 A max. | MOULDED SHELL | Liquid Crystal Polymer (LCP) |
| CONTACT RESISTANCE | 8 mΩ max. | PIN CONTACT | Copper and beryllium copper, gold over nickel plating |
| INSULATION RESISTANCE | 5000 MΩ min. @ 500 V DC | SOCKET CONTACT | Copper alloy, gold over nickel plating |
| DIELECTRIC WITHSTANDING VOLTAGE | Sea level : 600 V AC Altitude 21 km (70,000 ft) : 150 V AC | SOLDER CUP | Copper alloy, gold over nickel plating |
| CONTACT ENGAGING FORCE | 170 g max. (6 oz) | ENCAPSULANT | Epoxy resin |
| CONTACT SEPARATING FORCE | 14 g min. (0.5 oz) | | |
| CONTACT RETENTION | 2.26 kg (5 lbs) | | |
| DURABILITY | 500 mating cycles min. | | |