

STANDARD MICRO-D CONNECTORS

RECTANGULAR CONNECTORS

- Pigtail connector - Metal shell 56
- Pigtail connector - Low profile - Metal shell 58
- Pigtail connector - Plastic shell 60
- Solder cup connector - Metal shell 62
- Solder cup connector - Low profile - Metal shell 64
- Solder cup connector - Plastic shell 66

PCB RECTANGULAR CONNECTORS

- PCB connectors overview 68
- CBR (Condensed Board Right Angle) type - 0.100" pitch
Metal shell 70
- CBR (Condensed Board Right Angle) type - 0.100" pitch
Plastic shell 72
PCB layout for CBR type 74
- CBP (Condensed Board Right Angle) type - 0.100" pitch
Low profile - Metal shell 76
- CBP (Condensed Board Right Angle) type - 0.100" pitch
Low profile - Plastic shell 78
PCB layout for CBP type 80
- BR (Board Right Angle) type - 0.100" pitch - Metal shell 82
PCB layout for BR type 84
- BS (Board Straight) type - 0.100" pitch - Metal shell 86
- BS (Board Straight) type - 0.100" pitch - Plastic shell 88
PCB layout for BS type 90
- CBR (Condensed Board Right Angle) type - 0.075" pitch
Metal shell 92
PCB layout for CBR 0.075" type 94
- BS (Board Straight) type - 0.075" pitch - Metal shell 96
- BS (Board Straight) type - 0.075" pitch - Plastic shell 98
PCB layout for BS 0.075" type - MIL standard layout 100
PCB layout for BS 0.075" type - Specific layout 102

CONNECTOR SAVERS

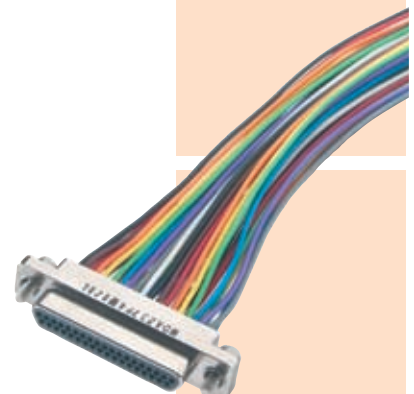
- One piece design - Metal or plastic shell 104
- One piece design - Low profile - Metal shell 105
- Back to back assembly - Metal or plastic shell 106
- Back to back assembly - Low profile - Metal shell 107

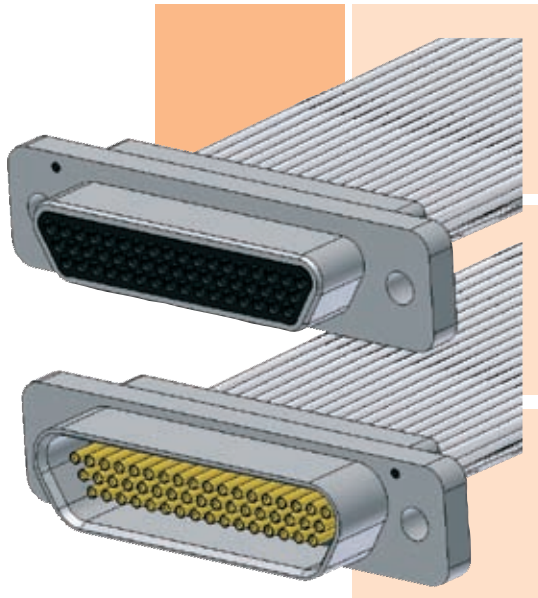
MICROSTRIP CONNECTORS

- Pigtail & solder cup assemblies 108
- PCB connector 110
- Microstrip general information 112
PCB layout for microstrip connector - 0.050" pitch 115

CIRCULAR CONNECTORS

- 118





RECTANGULAR CONNECTORS

PIGTAIL CONNECTOR

METAL SHELL

- High performance metal connector and PTFE wire.
- Environmentally sealed.
- Operating temperature : 150°C or 200°C.
- 9 to 100 contacts.

IDENTIFICATION CODE

MDA 2 51 S 4 L 050 B

SERIES

MDA : Micro-D AXON' standard series.

CONNECTOR TYPE

- 1** : Cadmium aluminium shell + potting 150°C.
- 2** : Nickel aluminium shell + potting 150°C.
- 3** : Nickel aluminium shell + potting 200°C.
- S** : Passivated stainless steel shell + potting 200°C.

NUMBER OF CONTACTS 09,15,21,25,31,37,51, 51DR, 100.
See pages 16&17 for contact arrangements.

CONNECTOR GENDER

- P** : Male (pin contacts).
- S** : Female (socket contacts).

WIRE TYPE

For colour codes F, L, W

- 1** : E 2607 , AWG 26, 7 strands, 600V.
- 4** : E 2619 , AWG 26, 19 strands, 600V
- 6** : E 2807 , AWG 28, 7 strands, 600V.
- 8** : E 3007 , AWG 30, 7 strands, 600V.
- A** : E 2407 , AWG 24, 7 strands, 600V.
- C** : E 2419 , AWG 24, 19 strands, 600V.
- E** : M22759/33, AWG 26,19 strands, 600V.

For colour code V only

- 3** : M22759/11 , AWG26. 19 strands, 600V.
 - F** : E2607, AWG26, 7 strands, 600V.
- Solid uninsulated wires
- G** : AWG 25 gold plated.
 - T** : AWG 24 tin plated.

See page 19 for wire types.

COLOUR CODE

- F** : All yellow.
- L** : All white.

BLANK : If wire type is G or T.

- W** : 10 colour repeat.
 - V** : MIL-STD-681 striped (only for wire types 3 and F).
- See page 20 for colour code.

WIRE LENGTH (cm)

Attention ! Wire length in centimetres - (1cm = 10mm = 0.394").

L	L ≤ 10	10 < L ≤ 100	L > 100
in cm (inches)	L ≤ 3.940	3.940 < L ≤ 39.40	L > 39.40
TOLERANCE	-0 / +0.5	-0 / +3	-0 / +5
in cm (inches)	-0 / +0.200	-0 / +1.180	-0 / +1.970

HARDWARE

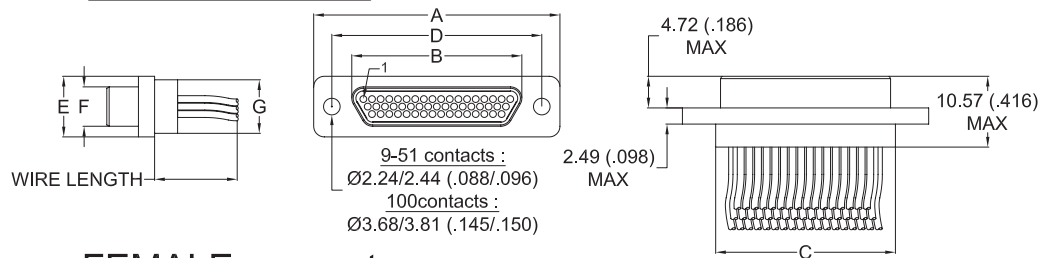
- B** : No hardware.
- C** : U-clips with low profile hex skt head jackscrews (removable).
- D** : U-clips with low profile slot head jackscrews (removable).
- M** : Low profile hex skt head jackscrews (removable).
- N** : High profile hex skt head jackscrews (removable).
- S** : Low profile slot head jackscrews (removable).
- T** : High profile slot head jackscrews (removable).
- P** : Jackposts (removable).
- K** : High profile slot head jackscrews (non removable).
- L** : Low profile hex skt head jackscrews (non removable).
- F** : Float mount (non removable).

METAL CONNECTORS ARE SUPPLIED WITH ANTI-STATIC PROTECTIVE DUST CAPS

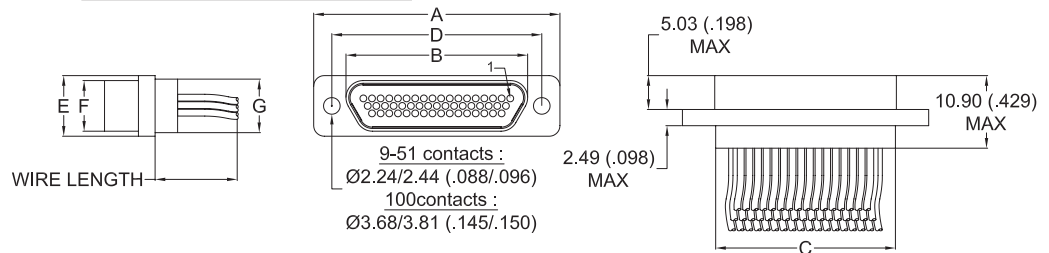
DIMENSIONS

Dimensions are in millimetres (inches).

MALE connector



FEMALE connector



	A ± 0.25 (± 0.10)	B max.		C $-0.46/+0.25$ ($-0.018/+0.010$)	D ± 0.13 (± 0.005)	E ± 0.25 (± 0.10)	F max.		G max.
		Male	Female				Male	Female	
9 P / 9 S	19.69 .775	8.48 .334	10.16 .400	9.91 .390	14.35 .565	7.57 .298	4.69 .185	6.35 .250	6.86 .270
15 P / 15 S	23.50 .925	12.29 .484	14.00 .551	13.72 .540	18.16 .715	7.57 .298	4.69 .185	6.35 .250	6.86 .270
21 P / 21 S	27.31 1.075	16.10 .634	17.81 .701	17.53 .690	21.97 .865	7.57 .298	4.69 .185	6.35 .250	6.86 .270
25 P / 25 S	29.85 1.175	18.64 .734	20.35 .801	20.07 .790	24.51 .965	7.57 .298	4.69 .185	6.35 .250	6.86 .270
31 P / 31 S	33.66 1.325	22.45 .884	24.16 .951	23.88 .940	28.32 1.115	7.57 .298	4.69 .185	6.35 .250	6.86 .270
37 P / 37 S	37.47 1.475	26.26 1.034	27.96 1.101	27.69 1.090	32.13 1.265	7.57 .298	4.69 .185	6.35 .250	6.86 .270
51DR P / 51DR S	46.36 1.825	35.15 1.384	36.83 1.450	36.58 1.440	41.02 1.615	7.57 .298	4.69 .185	6.35 .250	6.86 .270
51 P / 51 S	36.20 1.425	24.99 .984	26.70 1.051	26.42 1.040	30.86 1.215	8.66 .341	5.79 .228	7.44 .293	7.87 .310
100 P / 100 S	54.86 2.160	35.15 1.384	36.86 1.451	36.37 1.432	45.72 1.800	9.75 .384	6.88 .271	8.46 .333	9.14 .360

SUMMARY OF CHARACTERISTICS

ELECTRICAL & MECHANICAL PERFORMANCE	
CURRENT RATING	3 A max.
CONTACT RESISTANCE	8 m Ω max.
INSULATION RESISTANCE	5000 M Ω min. @ 500 V DC
DIELECTRIC WITHSTANDING VOLTAGE	Sea level : 600 V AC Altitude 21 km (70,000 ft) : 150 V AC
CONTACT ENGAGING FORCE	170 g max. (6 oz)
CONTACT SEPARATING FORCE	14 g min. (0.5 oz)
CONTACT RETENTION	2.26 kg (5 lbs)
DURABILITY	500 mating cycles min.
VIBRATION	20g's - No discontinuity > 1 μ s
SHOCK	50g's - No discontinuity > 1 μ s

MATERIAL & FINISH	
SHELL	Aluminium alloy 6061 or 300 series stainless steel, see ordering info for plating options
MOULDED INSULATOR	Liquid Crystal Polymer (LCP)
INTERFACIAL SEAL	Fluorosilicone rubber
PIN CONTACT	Copper and beryllium copper, gold over nickel plating
SOCKET CONTACT	Copper alloy, gold over nickel plating
ENCAPSULANT	Epoxy resin
HARDWARE	300 series stainless steel, passivated

SEE PAGE 15 FOR MORE INFORMATION



RECTANGULAR CONNECTORS

PIGTAIL CONNECTOR

LOW PROFILE METAL SHELL

- High performance metal connector and PTFE wire.
- Operating temperature : 150°C or 200°C.
- 9 to 51 contacts.

IDENTIFICATION CODE

MDA 2 L51 S 4 L 050 B

SERIES

MDA : Micro-D AXON' standard series.

CONNECTOR TYPE

- 1** : Cadmium aluminium shell + potting 150°C.
- 2** : Nickel aluminium shell + potting 150°C.
- 3** : Nickel aluminium shell + potting 200°C.
- S** : Passivated stainless steel shell + potting 200°C.

NUMBER OF CONTACTS L09, L15, L21, L25, L31, L37, L51
See pages 16 & 17 for contact arrangements.

CONNECTOR GENDER

- P** : Male (pin contacts).
- S** : Female (socket contacts).

WIRE TYPE

For colour codes F, L, W

- 1** : E 2607, AWG 26, 7 strands, 600V.
- 4** : E 2619, AWG 26, 19 strands, 600V.
- 6** : E 2807, AWG 28, 7 strands, 600V.
- 8** : E 3007, AWG 30, 7 strands, 600V.
- A** : E 2407, AWG 24, 7 strands, 600V.
- C** : E 2419, AWG 24, 19 strands, 600V.
- E** : M22759/33, AWG 26, 19 strands, 600V.

For colour code V only

- 3** : M22759/11, AWG26, 19 strands, 600V.
 - F** : E 2607, AWG 26, 7 strands, 600V.
 - G** : AWG 25 gold plated
 - T** : AWG 24 tin plated
- See page 19 for wire types.

COLOUR CODE

- F** : All yellow.
- L** : All white.

BLANK : If wire type is G or T.**W** : 10 colour repeat.

V : MIL-STD-681 striped (only for wire types 3 and F).
See page 20 for colour code.

WIRE LENGTH (cm)

Attention ! Wire length in centimetres - (1cm = 10mm = 0.394").

L	L ≤ 10	10 < L ≤ 100	L > 100
in cm (inches)	L ≤ 3.940	3.940 < L ≤ 39.40	L > 39.40
TOLERANCE	-0 / +0.5	-0 / +3	-0 / +5
in cm (inches)	-0 / +0.200	-0 / +1.180	-0 / +1.970

HARDWARE

B : No hardware.

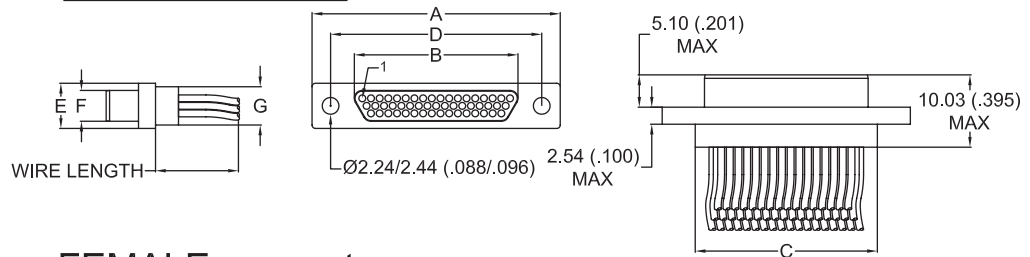
- C** : U-clips with low profile hex skt head jackscrews (removable).
- D** : U-clips with low profile slot head jackscrews (removable).
- M** : Low profile hex skt head jackscrews (removable).
- N** : High profile hex skt head jackscrews (removable).
- S** : Low profile slot head jackscrews (removable).
- T** : High profile slot head jackscrews (removable).
- P** : Jackposts (removable).
- K** : High profile slot head jackscrews (non removable).
- L** : Low profile hex skt head jackscrews (non removable).
- F** : Float mount (non removable).

METAL CONNECTORS ARE SUPPLIED WITH ANTI-STATIC PROTECTIVE DUST CAPS

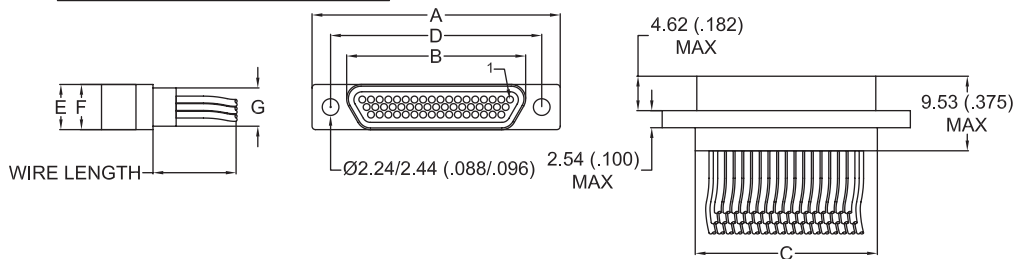
DIMENSIONS

Dimensions are in millimetres (inches).

MALE connector



FEMALE connector



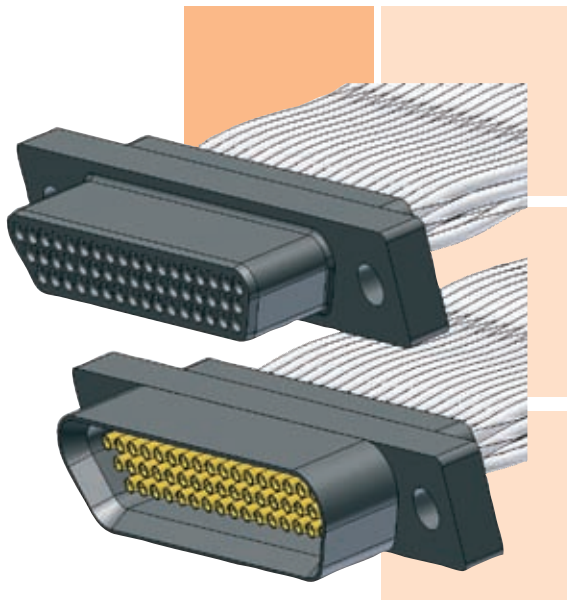
	A ± 0.25 (±.010)	B max.		C -0.46/+0.25 (-.018/+.010)	D ± 0.13 (±.005)	E ± 0.25 (±.010)	F max.		G max.
		Male	Female				Male	Female	
9 P / 9 S	19.76 .778	7.47 .294	9.65 .380	10.11 .398	14.35 .565	5.28 .208	3.40 .134	5.53 .218	4.39 .173
15 P / 15 S	23.57 .928	11.28 .444	13.46 .530	13.92 .548	18.16 .715	5.28 .208	3.40 .134	5.53 .218	4.39 .173
21 P / 21 S	27.38 1.078	15.09 .594	17.27 .680	17.73 .698	21.97 .865	5.28 .208	3.40 .134	5.53 .218	4.39 .173
25 P / 25 S	29.92 1.178	17.63 .694	19.81 .780	20.27 .798	24.51 .965	5.28 .208	3.40 .134	5.53 .218	4.39 .173
31 P / 31 S	33.73 1.328	21.44 .844	23.62 .930	24.08 .948	28.32 1.115	5.28 .208	3.40 .134	5.53 .218	4.39 .173
37 P / 37 S	37.54 1.478	25.25 .994	27.43 1.080	27.89 1.098	32.13 1.265	5.28 .208	3.40 .134	5.53 .218	4.39 .173
51 P / 51 S	36.27 1.428	23.98 .944	26.16 1.030	26.62 1.048	30.86 1.215	6.35 .250	4.50 .177	6.60 .260	5.59 .220

SUMMARY OF CHARACTERISTICS

ELECTRICAL & MECHANICAL PERFORMANCE	
CURRENT RATING	3 A max.
CONTACT RESISTANCE	8 mΩ max.
INSULATION RESISTANCE	5000 MΩ min. @ 500 V AC
DIELECTRIC WITHSTANDING VOLTAGE	Sea level : 600 V AC Altitude 21 km (70,000 ft) : 150 V AC
CONTACT ENGAGING FORCE	170 g max. (6 oz)
CONTACT SEPARATING FORCE	14 g min. (0,5 oz)
CONTACT RETENTION	2,26 kg (5 lbs)
DURABILITY	500 mating cycles min.
VIBRATION	20g's - No discontinuity > 1µs
SHOCK	50g's - No discontinuity > 1µs

MATERIAL & FINISH	
SHELL	Aluminium alloy 6061 or 300 series stainless steel, see ordering info for plating options
MOULDED INSULATOR	Liquid Crystal Polymer (LCP)
PIN CONTACT	Copper and beryllium copper, gold over nickel plating
SOCKET CONTACT	Copper alloy, gold over nickel plating
ENCAPSULENT	Epoxy resin
HARDWARE	300 series stainless steel, passivated

SEE PAGE 15 FOR MORE INFORMATION



RECTANGULAR CONNECTORS

PIGTAIL CONNECTOR

PLASTIC SHELL

- Low cost plastic connector.
- Operating temperature : 150°C or 200°C.
- 9 to 51 contacts.

IDENTIFICATION CODE

MDA P 51 S 4 L 050 B

SERIES

MDA : Micro-D AXON' standard series.

CONNECTOR TYPE

P : LCP shell + potting 150°C.
L : LCP shell + potting 200°C.

NUMBER OF CONTACTS

09,15,21,25,31,37,51. **See pages 16&17 for contact arrangements.**

CONNECTOR GENDER

P : Male (pin contacts).
S : Female (socket contacts).

WIRE TYPE

For colour codes **F, L, W**

1 : E 2607 , AWG 26 , 7 strands , 600V.
4 : E 2619 , AWG 26 , 19 strands , 600V
6 : E 2807 , AWG 28 , 7 strands , 600V.
8 : E 3007 , AWG 30 , 7 strands , 600V.
A : E 2407 , AWG 24 , 7 strands , 600V.
C : E 2419 , AWG 24 , 19 strands , 600V.
E : M22759/33 , AWG 26,19 strands , 600V.

For colour code **V** only

3 : M22759/11 , AWG26.
 19 strands , 600V.
F : E2607 , AWG26 , 7 strands , 600V.
 Solid uninsulated wires
G : AWG 25 gold plated.
T : AWG 24 tin plated.
See page 19 for wire types.

COLOUR CODE

F : All yellow.
L : All white.

BLANK : If wire type is G or T.
W : 10 colour repeat.

V : MIL-STD-681 striped (only for wire types 3 and F).
See page 20 for colour code.

WIRE LENGTH (cm)

Attention ! wire length in centimetres - (1cm = 10mm = 0.394").

L	L ≤ 10	10 < L ≤ 100	L > 100
in cm (inches)	L ≤ 3.940	3.940 < L ≤ 39.40	L > 39.40
TOLERANCE	-0 / +0.5	-0 / +3	-0 / +5
in cm (inches)	-0 / +0.200	-0 / +1.180	-0 / +1.970

HARDWARE

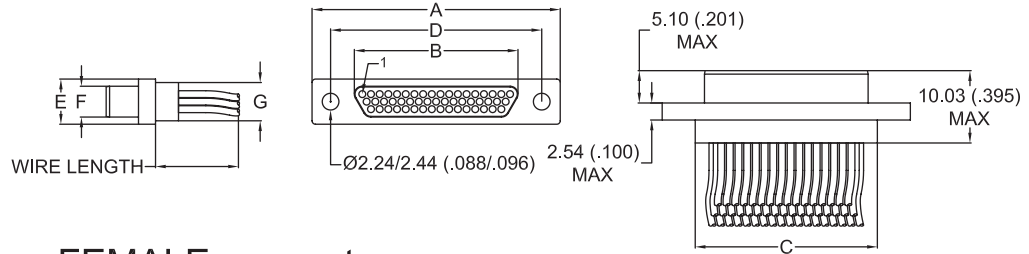
B : No hardware.

C : U-clips with low profile hex skt head jackscrews (removable).
D : U-clips with low profile slot head jackscrews (removable).
M : Low profile hex skt head jackscrews (removable).
N : High profile hex skt head jackscrews (removable).
S : Low profile slot head jackscrews (removable).
T : High profile slot head jackscrews (removable).
P : jackposts (removable).
K : High profile slot head jackscrews (non removable).
L : Low profile hex skt head jackscrews (non removable).
F : Float mount (non removable).

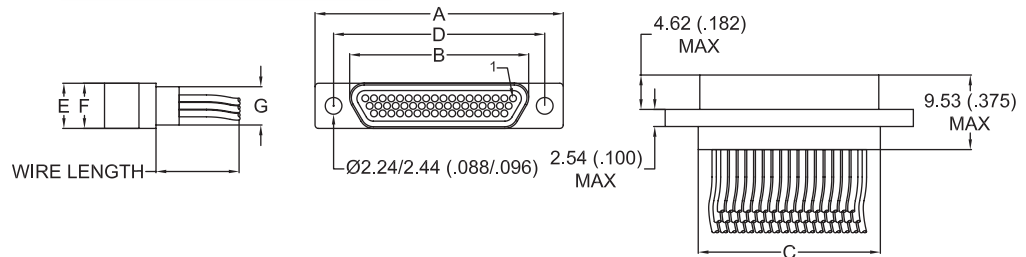
DIMENSIONS

Dimensions are in millimetres (inches).

MALE connector



FEMALE connector



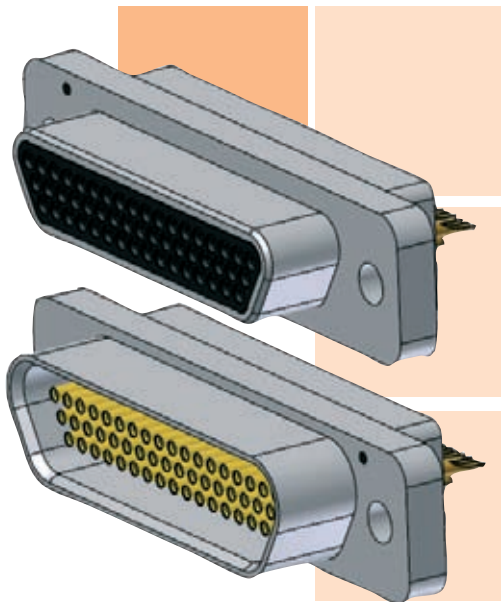
Standard Micro-D connectors

	A ± 0.25 (±.010)	B max.		C -0.46/+0.25 (-.018/+0.010)	D ± 0.13 (±.005)	E ± 0.25 (±.010)	F max.		G max.
		Male	Female				Male	Female	
9 P / 9 S	19.76 .778	7.41 .292	9.65 .380	10.11 .398	14.35 .565	5.28 .208	3.40 .134	5.53 .218	4.39 .173
15 P / 15 S	23.57 .928	11.22 .442	13.46 .530	13.92 .548	18.16 .715	5.28 .208	3.40 .134	5.53 .218	4.39 .173
21 P / 21 S	27.38 1.078	15.03 .592	17.27 .680	17.73 .698	21.97 .865	5.28 .208	3.40 .134	5.53 .218	4.39 .173
25 P / 25 S	29.92 1.178	17.57 .692	19.81 .780	20.27 .798	24.51 .965	5.28 .208	3.40 .134	5.53 .218	4.39 .173
31 P / 31 S	33.73 1.328	21.38 .842	23.62 .930	24.08 .948	28.32 1.115	5.28 .208	3.40 .134	5.53 .218	4.39 .173
37 P / 37 S	37.54 1.478	25.19 .992	27.43 1.080	27.89 1.098	32.13 1.265	5.28 .208	3.40 .134	5.53 .218	4.39 .173
51 P / 51 S	36.27 1.428	23.92 .942	26.16 1.030	26.62 1.048	30.86 1.215	6.35 .250	4.50 .177	6.60 .260	5.59 .220

SUMMARY OF CHARACTERISTICS

ELECTRICAL & MECHANICAL PERFORMANCE		MATERIAL & FINISH	
CURRENT RATING	3 A max.	MOULDED SHELL	Liquid Crystal Polymer (LCP)
CONTACT RESISTANCE	8 mΩ max.	PIN CONTACT	Copper and beryllium copper, gold over nickel plating
INSULATION RESISTANCE	5000 MΩ min. @ 500 V DC	SOCKET CONTACT	Copper Alloy, gold over nickel plating
DIELECTRIC WITHSTANDING VOLTAGE	Sea level : 600 V AC Altitude 21 km (70,000 ft) : 150 V AC	ENCAPSULANT	Epoxy resin
CONTACT ENGAGING FORCE	170 g max. (6 oz)	HARDWARE	300 series stainless steel, passivated
CONTACT SEPARATING FORCE	14 g min. (0.5 oz)		
CONTACT RETENTION	2.26 kg (5 lbs)		
DURABILITY	500 mating cycles min.		
VIBRATION	20g's – No discontinuity > 1 μs		
SHOCK	50g's – No discontinuity > 1 μs		

SEE PAGE 15 FOR MORE INFORMATION



RECTANGULAR CONNECTORS

SOLDER CUP CONNECTOR

METAL SHELL

- High performance metal connector and solder cup contacts.
- Environmentally sealed.
- Ideal for prototyping or where pigtail type connectors cannot be used.
- Operating temperature : 150°C or 200°C.
- 9 to 100 contacts.

IDENTIFICATION CODE

MDA

2

51

S

FS

B

SERIES

MDA : Micro-D AXON' standard series.

CONNECTOR TYPE

- 1** : Cadmium aluminium shell + potting 150°C.
- 2** : Nickel aluminium shell + potting 150°C.
- 3** : Nickel aluminium shell + potting 200°C.
- S** : Passivated stainless steel shell + potting 200°C.

NUMBER OF CONTACTS

09,15,21,25,31,37,51,51DR,100.
See pages 16&17 for contact arrangements.

CONNECTOR GENDER

- P** : Male (pin contacts).
- S** : Female (socket contacts).

SOLDER CUP

HARDWARE

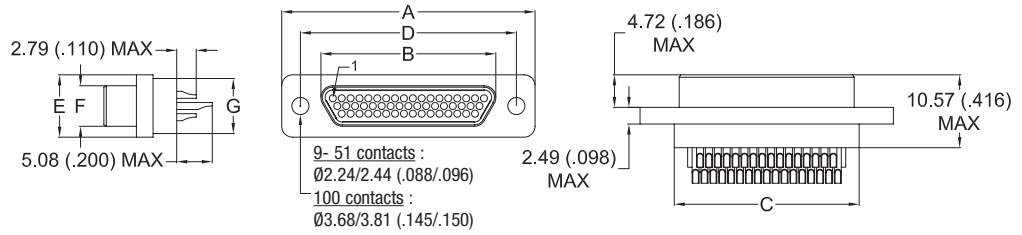
- B** : No hardware.
- C** : U-clips with low profile hex skt head jackscrews (removable).
- D** : U-clips with low profile slot head jackscrews (removable).
- M** : Low profile hex skt head jackscrews (removable).
- N** : High profile hex skt head jackscrews (removable).
- S** : Low profile slot head jackscrews (removable).
- T** : High profile slot head jackscrews (removable).
- P** : Jackposts (removable).
- K** : High profile slot head jackscrews (non removable).
- L** : Low profile hex skt head jackscrews (non removable).
- F** : Float mount (non removable).

METAL CONNECTORS ARE SUPPLIED WITH ANTI-STATIC PROTECTIVE DUST CAPS

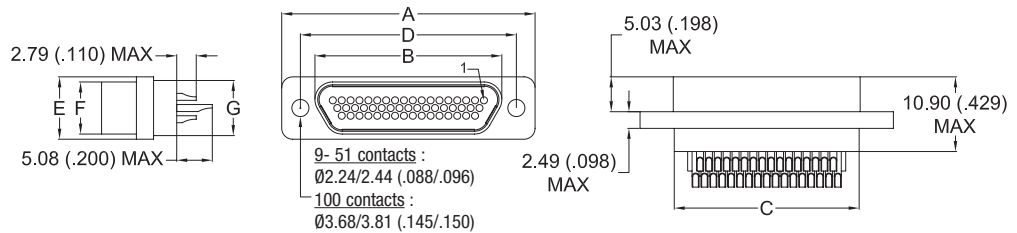
DIMENSIONS

Dimensions are in millimetres (inches).

MALE connector



FEMALE connector

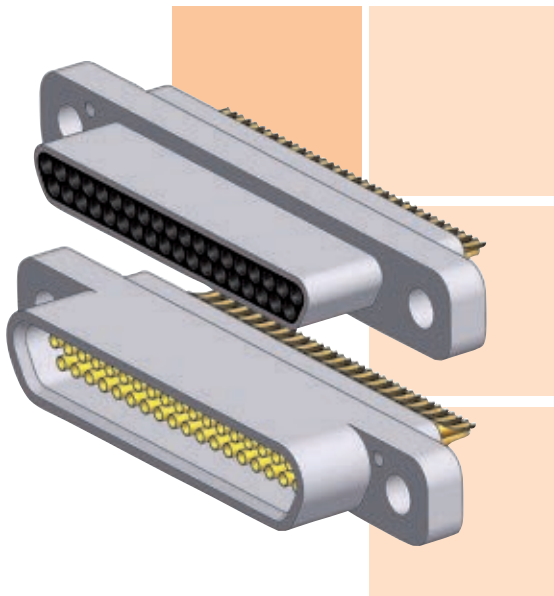


	A ± 0.25 ($\pm .010$)	B max.		C -0.46/+0.25 (-.018/+0.010)	D ± 0.13 ($\pm .005$)	E ± 0.25 ($\pm .010$)	F max.		G max.
		Male	Female				Male	Female	
9 P / 9 S	19.69 .775	8.48 .334	10.16 .400	9.91 .390	14.35 .565	7.57 .298	4.69 .185	6.35 .250	6.86 .270
15 P / 15 S	23.50 .925	12.29 .484	14.00 .551	13.72 .540	18.16 .715	7.57 .298	4.69 .185	6.35 .250	6.86 .270
21 P / 21 S	27.31 1.075	16.10 .634	17.81 .701	17.53 .690	21.97 .865	7.57 .298	4.69 .185	6.35 .250	6.86 .270
25 P / 25 S	29.85 1.175	18.64 .734	20.35 .801	20.07 .790	24.51 .965	7.57 .298	4.69 .185	6.35 .250	6.86 .270
31 P / 31 S	33.66 1.325	22.45 .884	24.16 .951	23.88 .940	28.32 1.115	7.57 .298	4.69 .185	6.35 .250	6.86 .270
37 P / 37 S	37.47 1.475	26.26 1.034	27.96 1.101	27.69 1.090	32.13 1.265	7.57 .298	4.69 .185	6.35 .250	6.86 .270
51DR P / 51DR S	46.36 1.825	35.15 1.384	36.83 1.450	36.58 1.440	41.02 1.615	7.57 .298	4.69 .185	6.35 .250	6.86 .270
51 P / 51 S	36.20 1.425	24.99 .984	26.70 1.051	26.42 1.040	30.86 1.215	8.66 .341	5.79 .228	7.44 .293	7.87 .310
100 P / 100 S	54.86 2.160	35.15 1.384	36.86 1.451	36.37 1.432	45.72 1.800	9.75 .384	6.88 .271	8.46 .333	9.14 .360

SUMMARY OF CHARACTERISTICS

ELECTRICAL & MECHANICAL PERFORMANCE		MATERIAL & FINISH	
CURRENT RATING	3 A max.	SHELL	Aluminium Alloy 6061 or 300 series stainless steel, see ordering info for plating options
CONTACT RESISTANCE	8 m Ω max.	MOULDED INSULATOR	Liquid Crystal Polymer (LCP)
INSULATION RESISTANCE	5000 M Ω min. @ 500 V DC	INTERFACIAL SEAL	Fluorosilicone rubber
DIELECTRIC WITHSTANDING VOLTAGE	Sea level : 600 V AC Altitude 21 km (70,000 ft) : 150 V AC	PIN CONTACT	Copper and beryllium copper, gold over nickel plating
CONTACT ENGAGING FORCE	170 g max. (6 oz)	SOCKET CONTACT	Copper alloy, gold over nickel plating
CONTACT SEPARATING FORCE	14 g min. (0.5 oz)	SOLDER CUP	Copper alloy, gold over nickel plating
CONTACT RETENTION	2.26 kg (5 lbs)	ENCAPSULANT	Epoxy resin
DURABILITY	500 mating cycles min.	HARDWARE	300 series stainless steel, passivated
VIBRATION	20g's - No discontinuity > 1 μ s		
SHOCK	50g's - No discontinuity > 1 μ s		

SEE PAGE 15 FOR MORE INFORMATION



RECTANGULAR CONNECTORS

SOLDER CUP
CONNECTOR

LOW PROFILE METAL SHELL

- High performance metal connector and solder cup contacts.
- Ideal for prototyping or when pigtail type connectors cannot be used.
- Operating temperature : 150°C or 200°C.
- 9 to 51 contacts.

IDENTIFICATION CODE

MDA

2

L51

S

FS

B

SERIES

MDA : Micro-D AXON' standard series.

CONNECTOR TYPE

- 1** : Cadmium aluminium shell + potting 150°C.
- 2** : Nickel aluminium shell + potting 150°C.
- 3** : Nickel aluminium shell + potting 200°C.
- S** : Passivated stainless steel shell + potting 200°C.

NUMBER OF CONTACTS

L09, L15, L21, L25, L31, L37, L51
See pages 16 & 17 for contact arrangements.

CONNECTOR GENDER

- P** : Male (pin contacts).
- S** : Female (socket contacts).

SOLDER CUP

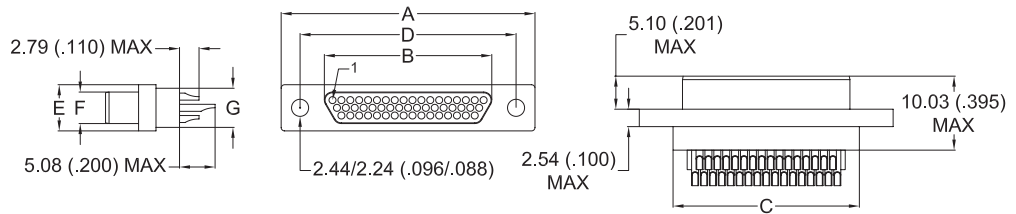
HARDWARE

- B** : No hardware.
- C** : U-clips with low profile hex skt head jackscrews (removable).
- D** : U-clips with low profile slot head jackscrews (removable).
- M** : Low profile hex skt head jackscrews (removable).
- N** : High profile hex skt head jackscrews (removable).
- S** : Low profile slot head jackscrews (removable).
- T** : High profile slot head jackscrews (removable).
- P** : Jackposts (removable).
- K** : High profile slot head jackscrews (non removable).
- L** : Low profile hex skt head jackscrews (non removable).
- F** : Float mount (non removable).

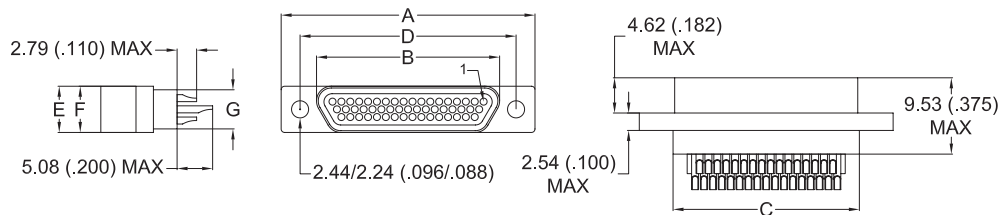
DIMENSIONS

Dimensions are in millimetres (inches).

MALE connector



FEMALE connector



Standard Micro-D connectors

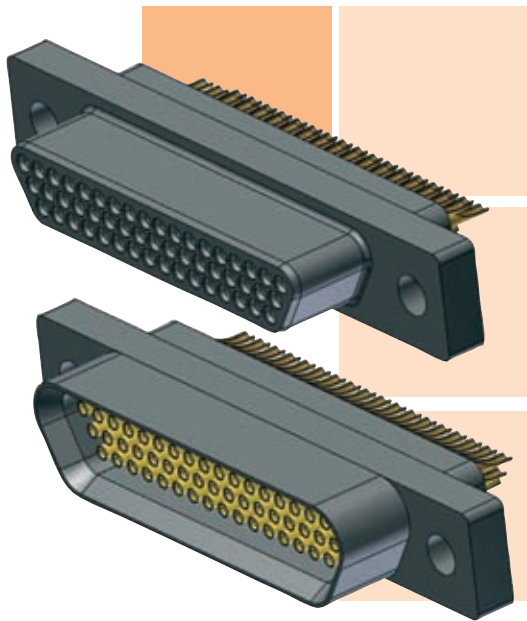
	A ± 0.25 (±.010)	B max.		C -0.46/+0.25 (-.018/+.010)	D ± 0.13 (±.005)	E ± 0.25 (±.010)	F max.		G max.
		Male	Female				Male	Female	
9 P / 9 S	19.76 .778	7.47 .294	9.65 .380	10.11 .398	14.35 .565	5.28 .208	3.40 .134	5.53 .218	4.39 .173
15 P / 15 S	23.57 .928	11.28 .444	13.46 .530	13.92 .548	18.16 .715	5.28 .208	3.40 .134	5.53 .218	4.39 .173
21 P / 21 S	27.38 1.078	15.09 .594	17.27 .680	17.73 .698	21.97 .865	5.28 .208	3.40 .134	5.53 .218	4.39 .173
25 P / 25 S	29.92 1.178	17.63 .694	19.81 .780	20.27 .798	24.51 .965	5.28 .208	3.40 .134	5.53 .218	4.39 .173
31 P / 31 S	33.73 1.328	21.44 .844	23.62 .930	24.08 .948	28.32 1.115	5.28 .208	3.40 .134	5.53 .218	4.39 .173
37 P / 37 S	37.54 1.478	25.25 .994	27.43 1.080	27.89 1.098	32.13 1.265	5.28 .208	3.40 .134	5.53 .218	4.39 .173
51 P / 51 S	36.27 1.428	23.98 .944	26.16 1.030	26.62 1.048	30.86 1.215	6.35 .250	4.50 .177	6.60 .260	5.59 .220

SUMMARY OF CHARACTERISTICS

ELECTRICAL & MECHANICAL PERFORMANCE	
CURRENT RATING	3 A max.
CONTACT RESISTANCE	8 mΩ max.
INSULATION RESISTANCE	5000 MΩ min. @ 500 V AC
DIELECTRIC WITHSTANDING VOLTAGE	Sea level : 600 V AC
	Altitude 21 km (70,000 ft) : 150 V AC
CONTACT ENGAGING FORCE	170 g max. (6 oz)
CONTACT SEPARATING FORCE	14 g min. (0,5 oz)
CONTACT RETENTION	2,26 kg (5 lbs)
DURABILITY	500 mating cycles min.
VIBRATION	20g's - No discontinuity > 1µs
SHOCK	50g's - No discontinuity > 1µs

MATERIAL & FINISH	
MOULDED SHELL	Liquid Crystal Polymer (LCP)
PIN CONTACT	Copper and beryllium copper, gold over nickel plating
SOCKET CONTACT	Copper alloy, gold over nickel plating
SOLDER CUP	Copper alloy, gold over nickel plating
ENCAPSULENT	Epoxy resin
HARDWARE	300 series stainless steel, passivated

SEE PAGE 15 FOR MORE INFORMATION



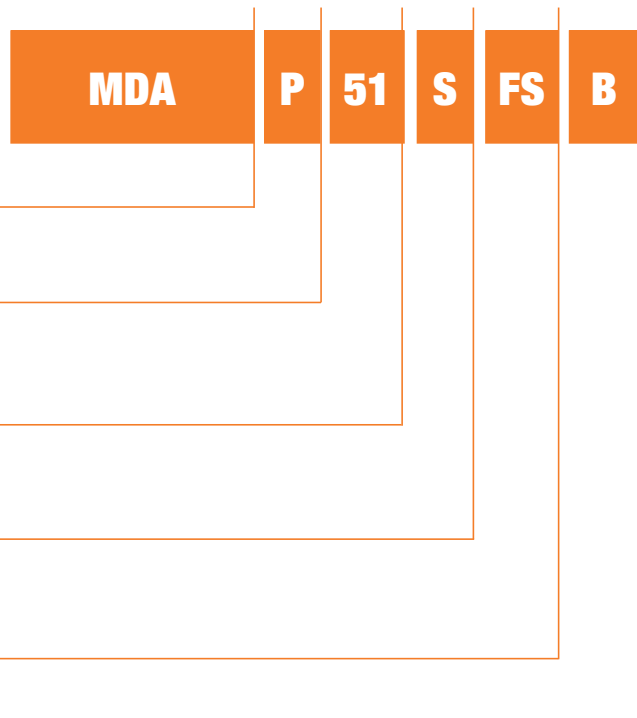
RECTANGULAR CONNECTORS

SOLDER CUP CONNECTOR

PLASTIC SHELL

- Low cost plastic connector and solder cup contacts.
- Ideal for prototyping or where pigtail type connectors cannot be used.
- Operating temperature : 150°C or 200°C.
- 9 to 51 contacts.

IDENTIFICATION CODE



SERIES

MDA : Micro-D AXON' standard series.

CONNECTOR TYPE

- P** : LCP shell + potting 150°C.
- L** : LCP shell + potting 200°C.

NUMBER OF CONTACTS

09,15,21,25,31,37,51.
See pages 16&17 for contact arrangements.

CONNECTOR GENDER

- P** : Male (pin contacts).
- S** : Female (socket contacts).

SOLDER CUP

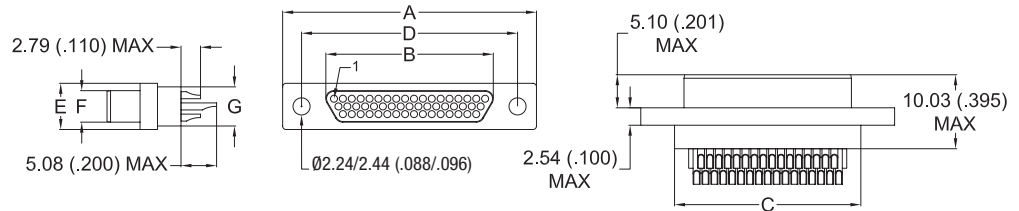
HARDWARE

- B** : No hardware.
- C** : U-clips with low profile hex skt head jackscrews (removable).
- D** : U-clips with low profile slot head jackscrews (removable).
- M** : Low profile hex skt head jackscrews (removable).
- N** : High profile hex skt head jackscrews (removable).
- S** : Low profile slot head jackscrews (removable).
- T** : High profile slot head jackscrews (removable).
- P** : Jackposts (removable).
- K** : High profile slot head jackscrews (non removable).
- L** : Low profile hex skt head jackscrews (non removable).
- F** : Float mount (non removable).

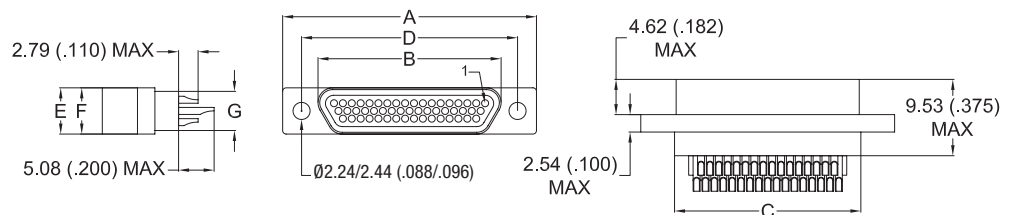
DIMENSIONS

Dimensions are in millimetres (inches).

MALE connector



FEMALE connector



	A ± 0.25 (±.010)	B max.		C -0.46/+0.25 (-.018/+0.010)	D ± 0.13 (±.005)	E ± 0.25 (±.010)	F max.		G max.
		Male	Female				Male	Female	
9 P / 9 S	19.76 .778	7.41 .292	9.65 .380	10.11 .398	14.35 .565	5.28 .208	3.40 .134	5.53 .218	4.39 .173
15 P / 15 S	23.57 .928	11.22 .442	13.46 .530	13.92 .548	18.16 .715	5.28 .208	3.40 .134	5.53 .218	4.39 .173
21 P / 21 S	27.38 1.078	15.03 .592	17.27 .680	17.73 .698	21.97 .865	5.28 .208	3.40 .134	5.53 .218	4.39 .173
25 P / 25 S	29.92 1.178	17.57 .692	19.81 .780	20.27 .798	24.51 .965	5.28 .208	3.40 .134	5.53 .218	4.39 .173
31 P / 31 S	33.73 1.328	21.38 .842	23.62 .930	24.08 .948	28.32 1.115	5.28 .208	3.40 .134	5.53 .218	4.39 .173
37 P / 37 S	37.54 1.478	25.19 .992	27.43 1.080	27.89 1.098	32.13 1.265	5.28 .208	3.40 .134	5.53 .218	4.39 .173
51 P / 51 S	36.27 1.428	23.92 .942	26.16 1.030	26.62 1.048	30.86 1.215	6.35 .250	4.50 .177	6.60 .260	5.59 .220

SUMMARY OF CHARACTERISTICS

ELECTRICAL & MECHANICAL PERFORMANCE		MATERIAL & FINISH	
CURRENT RATING	3 A max.	MOULDED SHELL	Liquid Crystal Polymer (LCP)
CONTACT RESISTANCE	8 mΩ max.	PIN CONTACT	Copper and beryllium copper, gold over nickel plating
INSULATION RESISTANCE	5000 MΩ min. @ 500 V DC	SOCKET CONTACT	Copper alloy, gold over nickel plating
DIELECTRIC WITHSTANDING VOLTAGE	Sea level : 600 V AC Altitude 21 km (70,000 ft) : 150 V AC	SOLDER CUP	Copper alloy, gold over nickel plating
CONTACT ENGAGING FORCE	170 g max. (6 oz)	ENCAPSULANT	Epoxy resin
CONTACT SEPARATING FORCE	14 g min. (0.5 oz)	HARDWARE	300 series stainless steel, passivated
CONTACT RETENTION	2.26 kg (5 lbs)		
DURABILITY	500 mating cycles min.		
VIBRATION	20g's – No discontinuity > 1 μs		
SHOCK	50g's – No discontinuity > 1 μs		

